

## How to Disable Driver Signature Verification in Windows Operating Systems

In case a user cannot load or install an unsigned driver, execute an unsigned software / program or that Windows cannot find a Microsoft signature associated with the software to be installed, then the following steps would be useful to follow. Versions of Windows Operating Systems, including Windows 8, impose restrictions to driver signing.

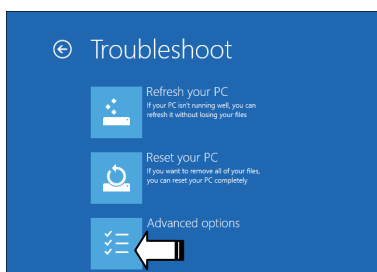
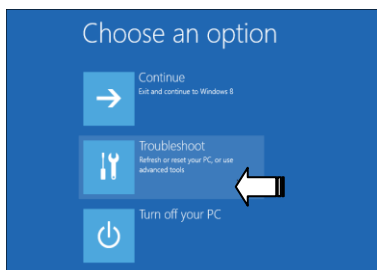
Driver signing is a method to verify the identity of the software publisher or the hardware driver vendor as a trusted source to protect user-system from malware. All drivers and programs need to be digitally signed or verified but this is not always possible, considering the frequency of drivers and programs that are published, even with unsigned legitimate software or driver.

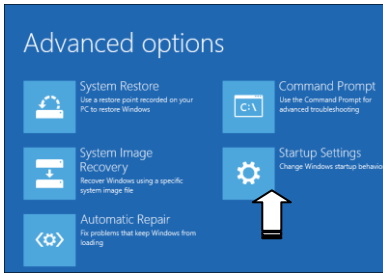
Unsigned drivers, therefore, require a few more steps for installation and this would be true for each computer that the user intends to use a development board with.

This process involves getting into Troubleshooting options from the boot manager.

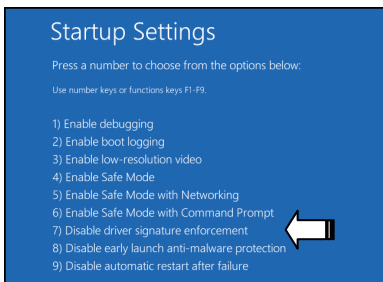
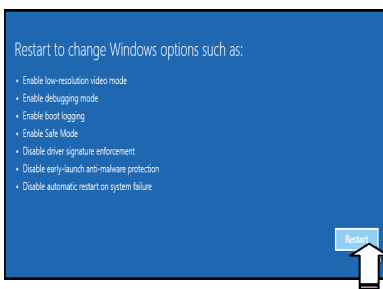
A possible option is suggested in the following steps.

- Select Restart from Power-on menu
  - On Windows 8, hold down the Windows key on the keyboard and press letter 'C' to open Charm menu or the login screen.
  - On Wins10, it is on the Start Menu.
- When the computer has rebooted, follow the stages illustrated below:





 Restart Computer



- Computer will reboot to enable installation of unsigned drivers.
- Proceed to install the unsigned driver.
- A warning message will appear, 'Windows can't verify the publisher of this driver software'.
- Click 'Install this driver software anyway' to complete the installation.

Note: after Restart, the driver signature enforcement will be enabled again for avoidance of security risk.