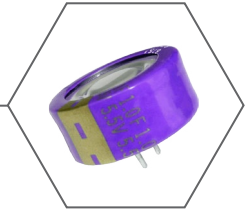


New Product Introduction

EEC-LF Series

Electric Double Layer Capacitor (Gold Capacitor) Stacked Coin Type



The NEW EEC-LF Series Electric Double Layer Capacitor Offers A One/Two Punch Providing A Wide Temperature Range As Low As -40°C AND Long Life Up To 6,000 Hours At 85°C !

Panasonic, a worldwide leader in Capacitor Products, introduces the NEW EEC-LF Series Electric Double Layer Capacitor (Gold Capacitor) featuring low temperature performance with an operating temperature of -40°C to $+85^{\circ}\text{C}$. With superior ageing characteristics and low leakage current, the EEC-LF Series features one part number: EEC-LF0H105. The NEW EEC-LF Series also provides a long life of 6,000 hours at $+85^{\circ}\text{C}$. That's more than ten years at 40°C ! Recommended for use to backup data in RTC base stations, electronic meters and industrial equipment. RoHS and REACH Compliant.

The Panasonic EEC-LF Series is a gold Capacitor, which achieves far better capacitance than Aluminium Electrolytic Capacitors (up to 1,000 times greater), plus exhibits superior charge and discharge performance compared to secondary Batteries. The additional benefits of multiple (over 500,000) rapid charge and discharge cycles and exceptional ageing characteristics makes the Panasonic LF Series EDLC ideal for applications such as RTC backup for smart meters or industrial automation processors. The increasing density of cellular networks and backhaul channels for transmission line access in cellular and fiber optic deployment also fit the enhanced lifetime offered by the EEC-LF Series.

The EEC-LF Series has a nominal capacitance value of 1F rated at 5.5V in a compact radial housing less than 10mm high and 21.5mm in diameter. This EDLC maintains its capacitance and internal resistance without drifting at low temperatures, as opposed to competitive products where the capacitance and internal resistance may change drastically, especially after the first three years of use. The biggest advantage that EEC-LF Series offers is 6,000 hours extended lifetime, three times that of previous Panasonic coin-type EDLCs. Due to the unique electrolyte used in the Panasonic EDLCs, this part also does not suffer from the "wetting effect".

Features & Benefits

- Wide Temperature Range: -40°C to $+85^{\circ}\text{C}$
- Maximum Operating Voltage: 5.5 VDC
- Nominal Capacitance: 1.0 F
- Long Life: 6000 Hours at 85°C
- RoHS and REACH Compliant

Applications

- Base Stations
- Electronic Meters
- Industrial Equipment
- Fish Finders
- Factory Automation
- Backup for RTC
- Backup for Data (RAM/IC)
- Assistance In Rapid Charge / Discharge