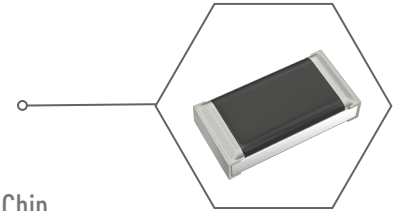


Line Extension

ERJ-PA2 Series High-Power, Anti-Surge Chip Resistors Capacitive-Coupled Isolation for High-Temperature and Small-Size



Panasonic is pleased to introduce a significant line extension of parts for the ERJ-PA2 Series Anti-Surge Chip Resistors. The newly expanded ERJ-PA2 Series now includes resistance values in the 5% tolerance to support all E24 resistance values as well as the 1% tolerances to support all E24 and E96 resistance values. Panasonic has expanded the tolerance for this Series as well by offering 0.5% tolerance in the E24 and E96 resistance values. With a 0402 case size and a rated power of 0.2W, these Resistors provide space savings without compromising on rated power specifications. The ERJ-PA2 Series features an ESD voltage of 3.0kV, which contributes to a high-reliability circuit design. A TCR of 100ppm and a tolerance of down to $\pm 0.5\%$ provide a very stable resistance and circuit operation.

Features

- New Tolerances Added: $\pm 5\%$ with E24, $\pm 1\%$ with E24 and E96, $\pm 0.5\%$ with E24 and E96
- Anti-ESD characteristic: (0402 anti-surge chip resistors) is 1.0kV
- 0402 Small Size with 0402 With High Rated Power 0.2W
- ESD Voltage 3.0kV
- TCR 100ppm for Tolerance $\pm 0.5\%$ and 1%
- Reference Standards: IEC 60115-8, JIS C 5201-8, EIAJ RC-2134B
- RoHS/REACH Compliant
- AEC-Q200 Compliant

Benefits

- Higher Circuit Reliability
- Space Saving Without Spec Compromise
- Stable Resistance Control and Circuit Operation
- Environmentally Friendly

Industries

- Automotive
- Industrial Electronics

Applications

- ECU
- Inverter Circuits, Power Circuits
- Lighting