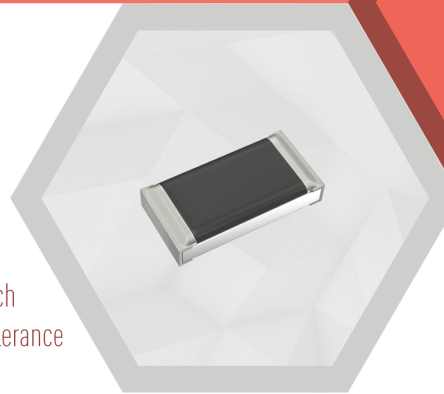


# ERJ-PA2 Series Anti-Surge Resistors

## Capacitive-Coupled Isolation for High-Temp and Small-Size!

With a 0402 case size and a rated power of 0.2W, the ERJ-PA2 Series resistors provide space savings without compromising on rated power specifications. The ERJ-PA2 Series features an ESD voltage of 3.0kV, which contributes to a high-reliability circuit design. A TCR of 100ppm and a tolerance of down to  $\pm 0.5\%$  provide a very stable resistance and circuit operation.



## Applications



Automotive/Transportation



Industrial Electronics



Consumer Electronics

## Features

ESD Voltage 3.0 kV

0402 Case Size with 0.2W Rated Power

TCR 100ppm

RoHS/REACH Compliant

## Benefits

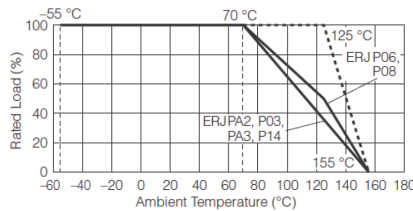
Higher Circuit Reliability

Space Saving without Spec. Compromise

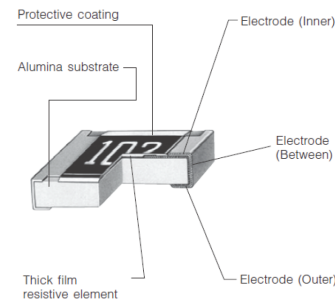
Stable Resistance and Circuit Operation

Environmentally Friendly

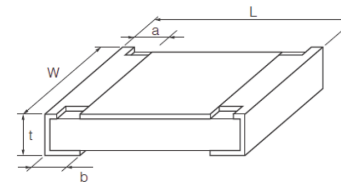
## Power Derating Curve



## Construction



## Case Dimensions



Part No. (inch size)	Dimensions (mm)					Mass (Weight) (g/1000 pcs.)
	L	W	a	b	t	
ERJPA2 (0402)	1.00 <sup>+0.05</sup>	0.50 <sup>+0.05</sup>	0.25 <sup>+0.10</sup>	0.25 <sup>+0.05</sup>	0.35 <sup>+0.05</sup>	0.8